

Model Q

Multi-Jet Magnetic Water Flow Meter

The Q meter is a multi-jet meter with light body and top attachable register unit totally isolated from the water pressure



Applications

For domestic consumption

Available Sizes

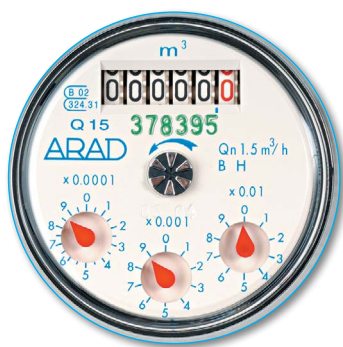
1/2"-3/4" (15mm-20mm)

Standards

MID 2014/22/EC (based on OIML R49 EN 14154 and ISO 4064:2014)

Features

- Sealed super dry magnetic register
- 6 digits counter + 3 pointers for high accuracy measurement readout
- Central "star" used for leak detection and electronic testing
- Lightweight
- Rotatable register for convenient positioning of dial



Q type dial

Technical Specifications

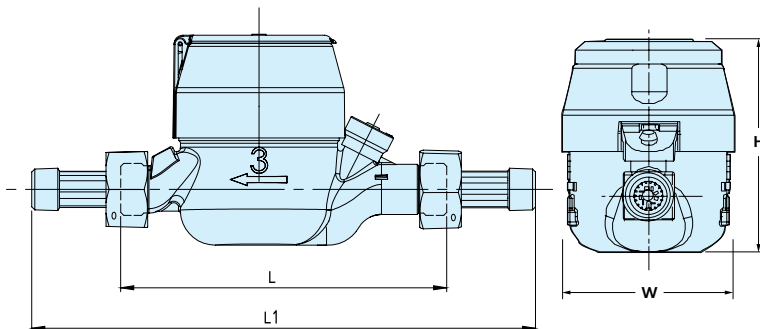
Maximum Working Pressure	10 bar
Maximum Working Temperature	50°C
Optional	Corrosion proof copper alloy
Coupling threads	BSP, NPSM

Model Q

Multi-Jet Magnetic Water Flow Meter

Dimensions

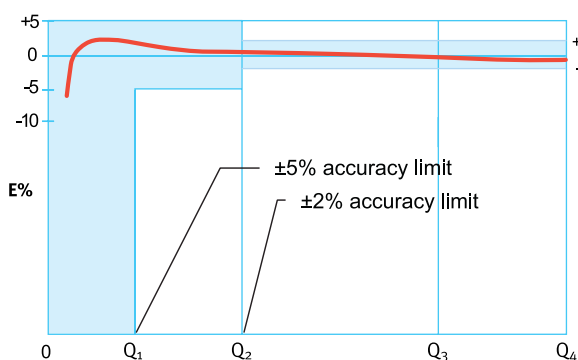
Model		Q15 (short)	Q15	Q20
Nominal size	(mm)	15	15	20
	(inch)	1/2	5/8	3/4
L - Length without couplings (mm)		165	190	190
L ₁ - Length with couplings (mm)		260	285	285
W- Width (mm)		95	95	82
H - Height (mm)		102	112	106
Weight (kg)		1.5	2	1.5
Weight with couplings (kg)		1.7	2.2	1.7



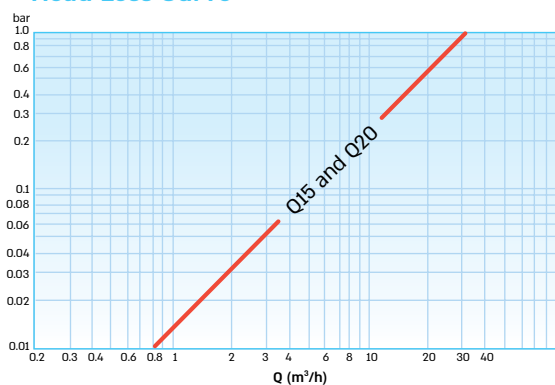
Performance data:

Model	Nominal size (inch)	Q4 Maximum Flowrate (m ³ /h)	Q3 Nominal Flowrate (m ³ /h)	Q2 Transitional Flowrate (m ³ /h)	Q1 Minimum Flowrate (m ³ /h)	R Q3 \ Q1	Smallest readable unit (liter)	Head Loss bar
Q15	1/2	2.000	1.6	0.0512	0.032	50	0.1	0.25
Q20	3/4	2.000	1.6	0.0512	0.032	50	0.1	0.25
Q20	3/4	3.125	2.5	0.08	0.05	50	0.1	0.63
Q20	3/4	3.125	2.5	0.05	0.03	80	0.1	0.63

Accuracy Curve



Head Loss Curve



Installation Requirements

- The Meter should be installed in horizontal position dial face up.
- Pipeline must be flushed before installation.
- The meter should be constantly full of water.