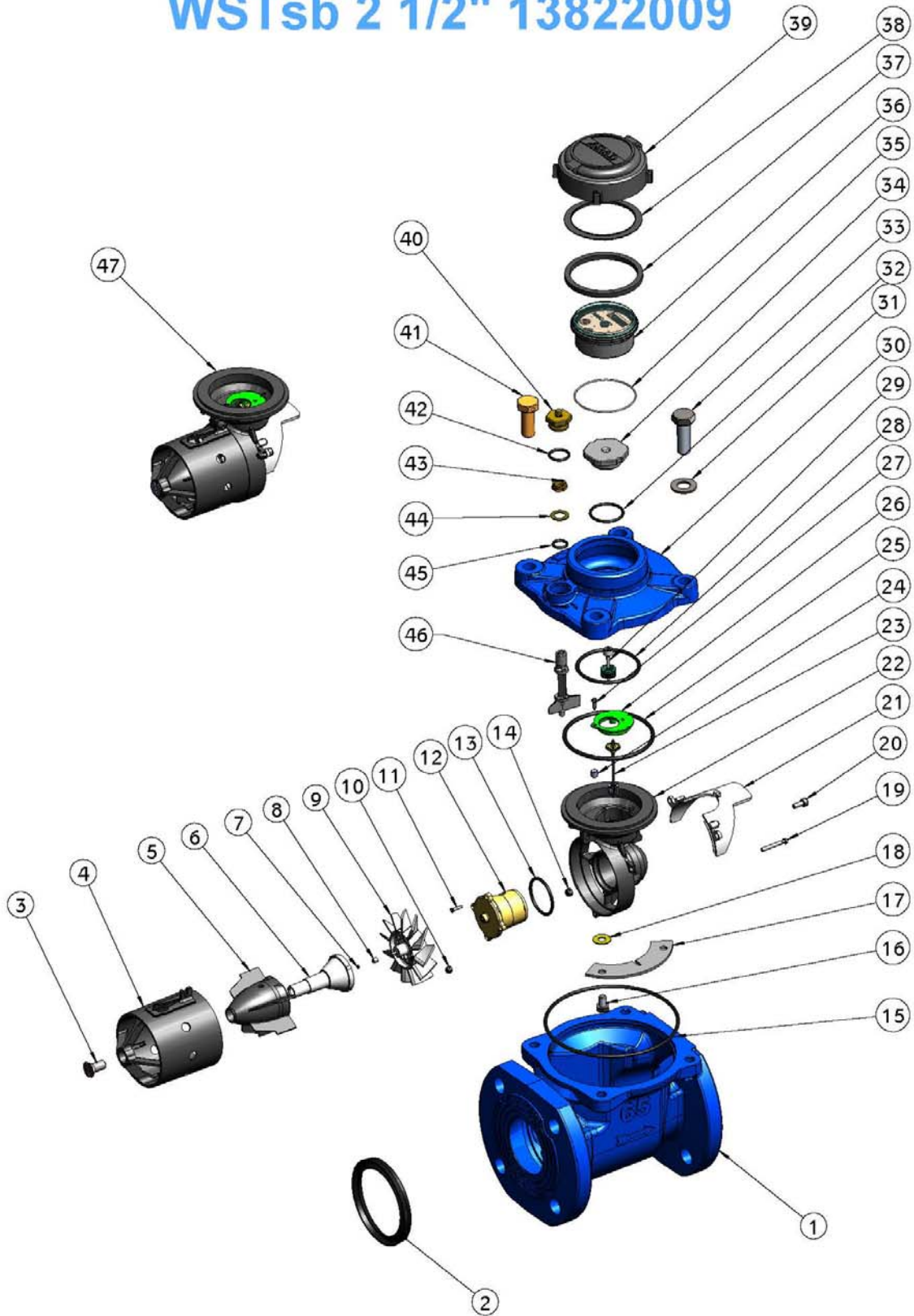


WSTsb 2 1/2" 13822009



WSTsb 2½"

| | Cat. No. | Description | Quantity |
|----|----------|---|----------|
| 1 | 32221059 | Body WSTsb 2 1/2" ISO 16 seal blue | 1 |
| 2 | 21480609 | Screw M10 L=20 DIN 963 A2 | 1 |
| 3 | 20629509 | Flow tube gasket WST 3 | 1 |
| 4 | 26354409 | Flow tube WSTsb 3 | 1 |
| 5 | 20382109 | Hex. nut M4 A2 DIN 985 | 1 |
| 6 | 25044609 | Flow straightener WSTsb 2"-3" | 1 |
| 7 | 20940109 | Bearing housing WST 3" 4" | 1 |
| 8 | 24901909 | Thrust bearing 3.5x1.5 tung.car | 2 |
| 9 | 24902109 | Bearing 5x2.4x5 tung.car | 2 |
| 10 | 20382609 | Hex. nut M5 A2 DIN 985 | 3 |
| 11 | 20603509 | O-ring PARKER 2-254 | 1 |
| 12 | 24622510 | Rear flow straightener WT 2 1/2" | 1 |
| 13 | 21181709 | Socket head cup screw M5x12 AISI304 | 3 |
| 14 | 21280309 | Rear spider screw | 1 |
| 15 | 23743619 | Impeller WST 2-4 assy | 1 |
| 16 | 21260109 | Flate head phillips 2.9x13 DIN 7982c-A2 | 4 |
| 17 | 20901229 | Worm gear housing WSTsb 2-4 assy 2 | 1 |
| 18 | 20607709 | O-ring ID-38 W-3 50shore | 1 |
| 19 | 21081709 | Hex cap screw M8X12 DIN 933-A2 | 4 |
| 20 | 23493309 | Clamping plate f/spider WT 2-4 | 2 |
| 21 | 27042409 | Spider front open WSTsb 2-4 mach.2 | 1 |
| 22 | 24900609 | Transmission shaft bushing WST 4-2 | 1 |
| 23 | 26510409 | Regulator WT 2 1/2-4 black | 1 |
| 24 | 26730849 | Upper transmission shaft WST assy 0020 | 1 |
| 25 | 26731939 | Intermediate trans. shaft 0019 WST assy | 1 |
| 26 | 23423609 | Transmission plate WST 2-4 | 1 |
| 27 | 21260009 | Pan phillips screw 6x1/2" DIN 7981 | 1 |
| 28 | 20602910 | O-ring BUSAK 50 shore ID-95 W-4 | 1 |
| 29 | 25222459 | Cover WSTsb 2"-4" blue | 1 |
| 30 | 23026609 | Washer M14 A2 DIN 125 | 4 |
| 31 | 21082119 | Hex. cap screw M14x2x40 DIN 933 | 3 |
| 32 | 20602609 | O-ring PARKER 2-112 ID-12.37 W-2.62 | 1 |
| 33 | 23126109 | Sealing ring regulator device WT 2-4 | 1 |
| 34 | 20382709 | Regulator lock nut WT | 1 |

| | | | |
|----|----------|---|---|
| 35 | 20602709 | O-ring PARKER 2-116 ID-18.72 W-2.62 | 1 |
| 36 | 21082009 | Regulator cap device WT | 1 |
| 37 | 21082120 | Hex. cap screw M14x2x40 DIN 933 drilled | 1 |
| 38 | 20601709 | O-ring PARKER 2-125 | 1 |
| 39 | 21430109 | Upper bearing screw WST 2-4 | 1 |
| 40 | 23142609 | Pressure ring | 1 |
| 41 | 20613009 | O-ring CPO No. NJ ID-64 W-1.5 70 SHORE | 1 |
| 42 | 54011109 | Register WSTsb 2 1/2" m3 3p EEC 0.873 | 1 |
| 43 | 23142709 | Sliding ring | 1 |
| 44 | 25824619 | Plastic cover ARAD lid assy | 1 |