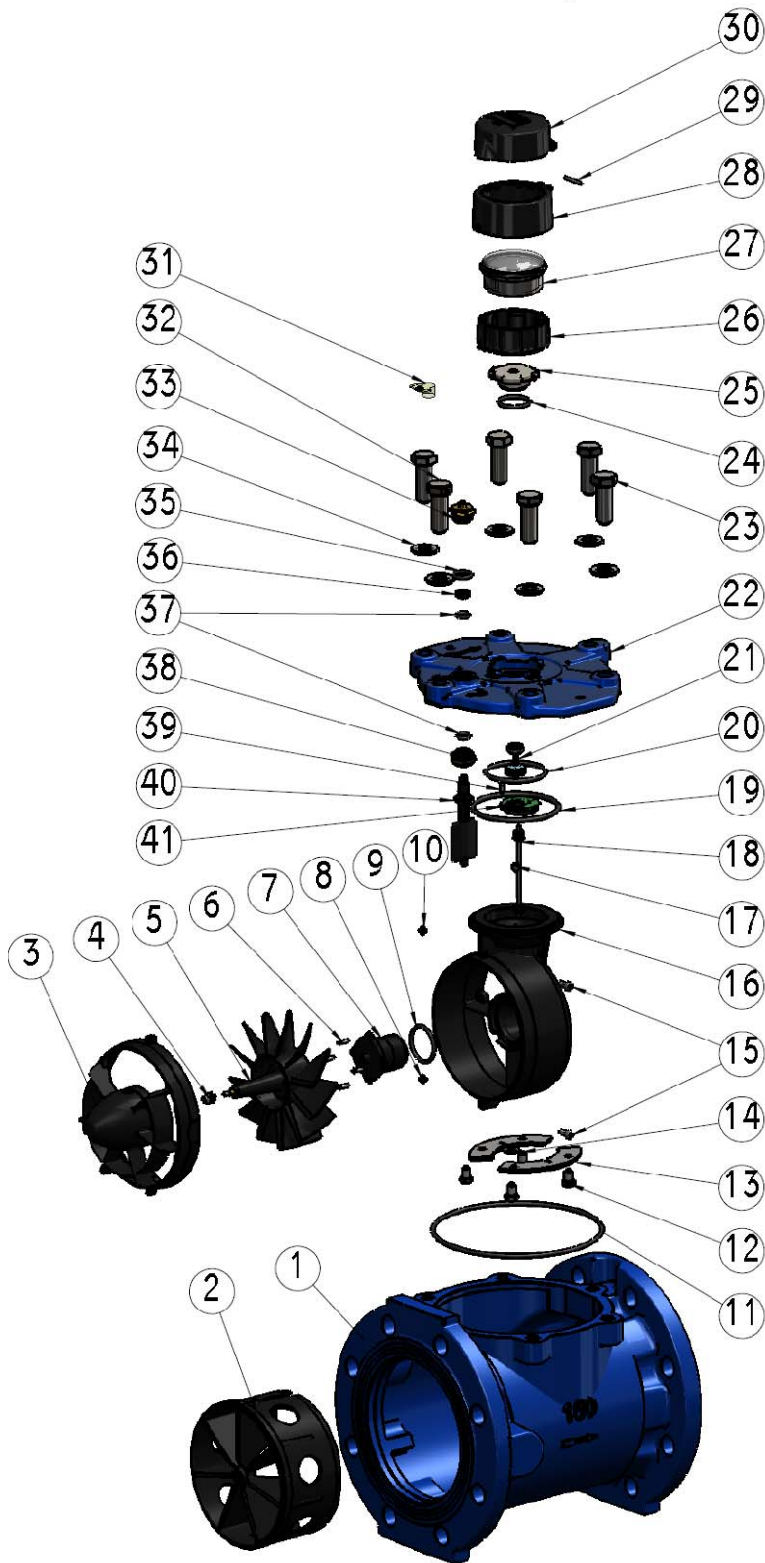


## WSTsb 6" ISO Bayonet



## WSTsb Bayonet 6"

No.	Cat. No.	Description	Quantity
1	3 22 592 59	Body WT 6 ISO blue	1
2	2 50 480 09	FLOW STRAIGHTENER WT 6"-12"	1
3	2 50 482 09	FRONT SPIDER WT 6 " - 12"	1
4	2 09 407 09	HOUSING BEARING WT II 6"-8"	1
5	2 37 425 69	Impeller WSTsb 6-12 assy	1
6	2 15 706 09	Pan head phillips screw 2.9X13 DIN 7981c-A4	4
7	2 09 014 19	Worm gear housing WSTsb 6-12 assy.2	1
8	2 03 826 09	HEX NUT M5 A2 DIN 985	1
9	2 06 077 09	O-RING ID=38 W=3 SHORE 50	1
10	2 03 826 09	HEX NUT M5 A2 DIN 985	1
11	2 06 030 09	O-ring PARKER 2-263 ID-183.74 W-3.53 NBR 70	1
12	2 10 817 09	HEX CAP SCREW M8x12 DIN 933 A4	4
13	2 34 933 09	Clamping plate f/spider WT 2-4	2
14	2 30 260 09	REAR SPIDER WASHER WT	1
15	2 11 817 09	SOCKET HEAD CAP SCREW M5x12 DIN912	2
16	2 70 466 09	SPIDER WSTsb 6"-12"	1
17	2 49 018 09	Upper transmission shaft bushing WT-II 6-8	1
18	2 67 320 19	Intermediate shaft WSTsb 6-12 0013 assy	1
19	2 06 029 10	O-RING BUSAK ID=95 W=4 SHORE 50° +5°	1
20	2 06 158 10	O-ring PARKER 2-230 ID-63.09 W-3.5 NBR 50	1
21	2 66 713 19	Upper transmission shaft WST 0026 blue magnet 17.5 assy	1
22	2 52 239 59	Cover WT 6-8 bayonet blue	1
23	2 10 819 09	HEX CAP SCREW M16x2x45 DIN 933 A2	5
24	2 06 017 09	O-ring PARKER 2-125 ID- 32.99 W-2.62 NBR 70	1
25	2 14 304 09	UPPER BEARING SCREW WST BAYONET BIG MAGNET	1
26	2 09 223 09	Register housing ARAD	1
27	5 40 250 80MID	Register WSTsb 6 m3 3p MID	1
28	2 58 257 09	Bayonet shroud drilled	1
29	2 67 402 09	Transmission shaft K 3/4	1
30	2 76 322 09	Plastic lid HL logo ARAD	1
31	2 45 722 20	Plastic seal ARAD L=300mm	1
32	2 10 819 10	HEX CAP SRCEW M16x2x45 DIN 933 DRILLED	1
33	2 10 820 09	Regulator cap device WT	1
34	2 30 213 09	Washer M16 A2 DIN125	6
35	2 06 027 09	O-ring PARKER 2-116 ID-18.72 W-2.62 NBR 70	1
36	2 03 827 09	Regulation lock nut WT	1
37	2 06 026 09	O-ring PARKER 2-112 ID-12.37 W-2.62 NBR 70	2
38	2 85 306 09	Regulator bushing WT 6-12	1
39	2 12 600 09	PAN HEAD PHILLIPS SCREW 6x1/2" DIN 7981	1
40	2 65 520 09	Regulator WT 6-8 black	1
41	2 34 236 09	TRANSMISSION PLATE WST 2"-4"	1