

Model MH 1/2"-2"

Hot Water Meter



Applications

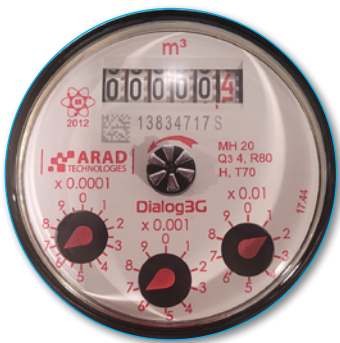
For domestic, agriculture and industrial use

Available Sizes

1/2", 3/4", 1", 1 1/2", 2"

Features

- Magnetically driven sealed registers. In Stainless steel Cup. Glass encapsulated guaranteed against fogging
- Wide selection of dial configurations (3 pointers; central pointer) and units of measurements
- Optional Output: Pulse



MH type dial

Technical Specifications

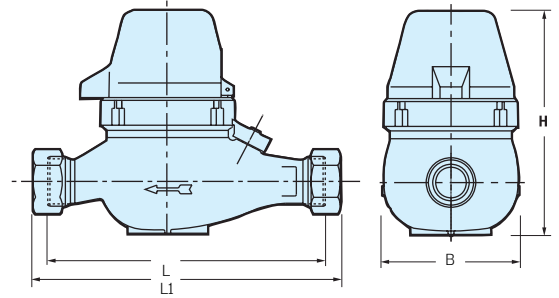
Maximum Working Pressure	10 bar
Maximum Working Temperature	Up to 90°C
Meter body material	Corrosion proof copper alloy
Coupling threads	BSP, NPSM

Model MH 1/2"-2"

Hot Water Meter

Dimensions

Model		M15 (short)	M15	M20	M25	M40	M50
Nominal size	(mm)	15	15	20	25	40	50
	(inch)	1/2	1/2	3/4	1	1 1/2	2
L - Length without couplings (mm)		165	190	190	260	300	300
L ₁ - Length with couplings (mm)		260	285	285	375	435	460
W- Width (mm)		95	95	95	105	125	160
H - Height (mm)		108	108	108	108	170	190
Weight (kg)		1.9	2	2	2.8	5.8	10.3
Weight with couplings (kg)		2.1	2.2	2.3	3.3	6.8	11.7



Performance data:

MH Performance at water temperature of 90°C

Model	Nominal size (inch)	Q _{min} (m ³ /h)	Q _t (m ³ /h)	Q _n (m ³ /h)	Q _{max} (m ³ /h)	Class	Smallest readable unit (Liter)	Indicating range (m ³)
MH 15	1/2"	0.030	0.120	1.5	3	B	0.05	10 ⁵
MH 20	3/4"	0.050	0.200	2.5	5	B	0.05	10 ⁵
MH 25	1"	0.100	0.400	5	10	B	0.05	10 ⁵
MH 32	1-1/4"	0.120	0.480	6	12	B	0.05	10 ⁵
MH 40	1-1/2"	0.200	0.800	10	20	B	0.5	10 ⁶
MH 50	2"	0.45	3000	15	30	B	0.5	10 ⁶

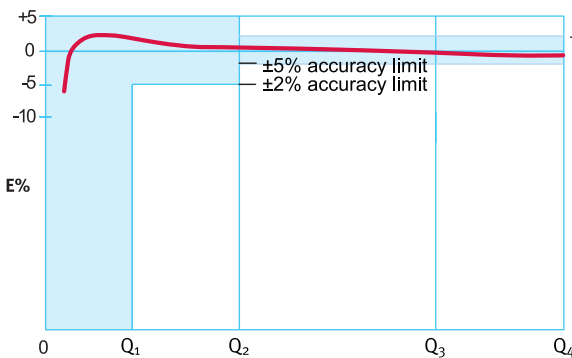


MH Performance at water temperature of 70°C according standard - ISO 4064:2014 (MID 2014/32/EU)

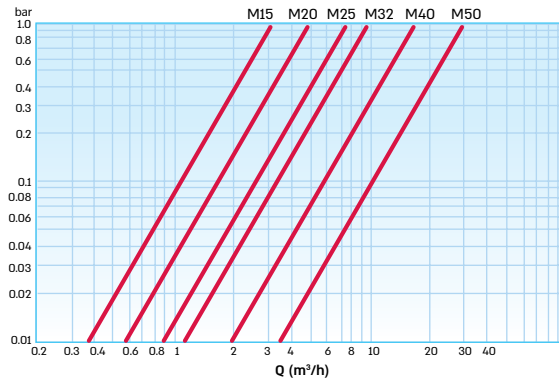
Model	Nominal size (inch)	Q ₁ (m ³ /h)	Q ₂ (m ³ /h)	Q ₃ (m ³ /h)	Q ₄ (m ³ /h)	R Q ₃ /Q ₁	Smallest readable unit (Liter)	Indicating range (m ³)
MH 20	3/4"	0.050	0.080	4	5	80	0.05	10 ⁵
MH 25	1"	0.080	0.128	4	5	50	0.05	10 ⁵
MH 25	1"	0.126	0.202	6.3	7.875	50	0.05	10 ⁵



Accuracy Curve



Head Loss Curve



Installation Requirements

- The Meter must be installed in horizontal position dial face up.
- Pipeline must be flushed before installation.
- The meter should be constantly full of water.