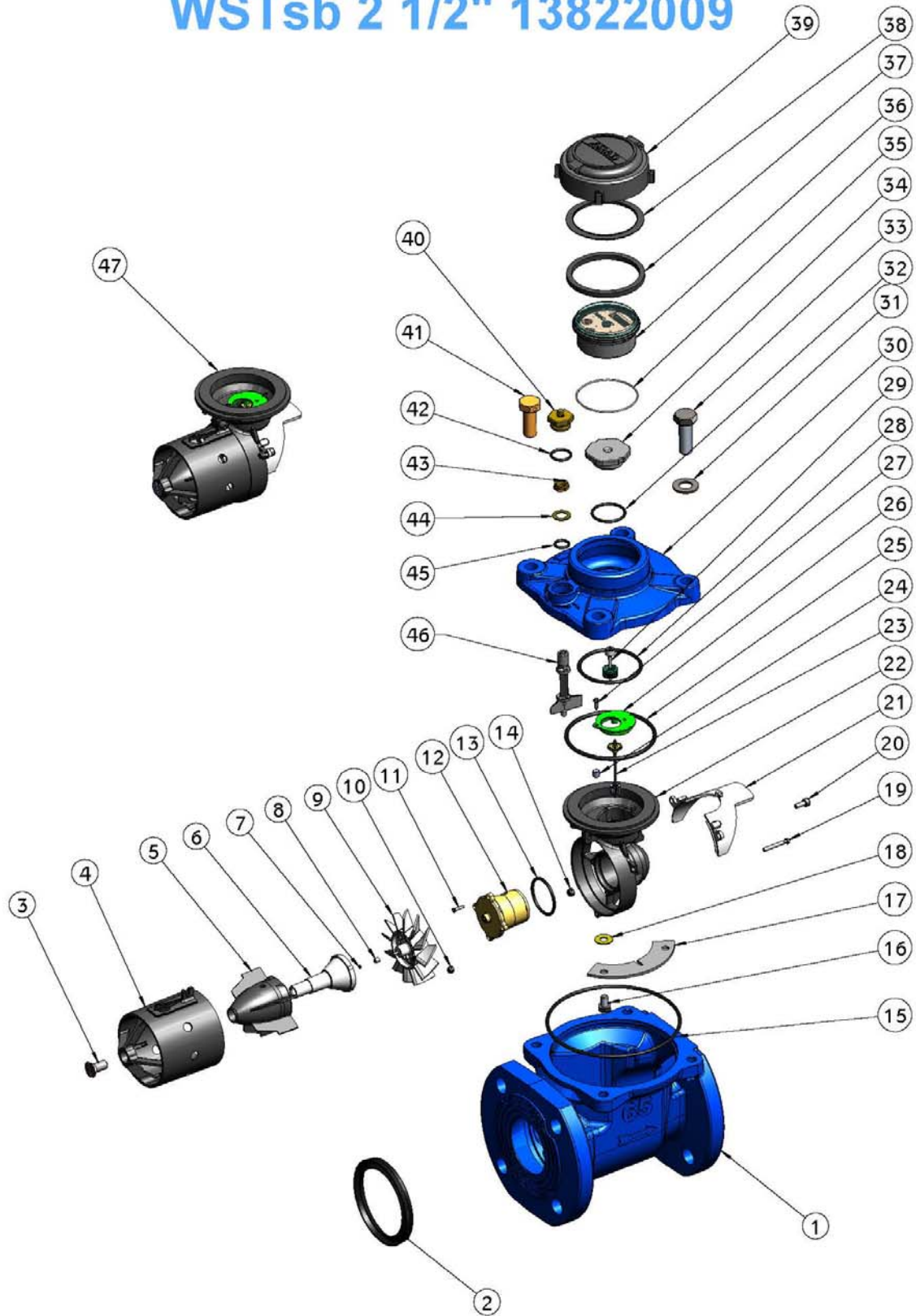


# WSTsb 2 1/2" 13822009



## WSTsb 2½"

	<b>Cat. No.</b>	<b>Description</b>	<b>Quantity</b>
1	32221059	Body WSTsb 2 1/2" ISO 16 seal blue	1
2	21480609	Screw M10 L=20 DIN 963 A2	1
3	20629509	Flow tube gasket WST 3	1
4	26354409	Flow tube WSTsb 3	1
5	20382109	Hex. nut M4 A2 DIN 985	1
6	25044609	Flow straightener WSTsb 2"-3"	1
7	20940109	Bearing housing WST 3" 4"	1
8	24901909	Thrust bearing 3.5x1.5 tung.car	2
9	24902109	Bearing 5x2.4x5 tung.car	2
10	20382609	Hex. nut M5 A2 DIN 985	3
11	20603509	O-ring PARKER 2-254	1
12	24622510	Rear flow straightener WT 2 1/2"	1
13	21181709	Socket head cup screw M5x12 AISI304	3
14	21280309	Rear spider screw	1
15	23743619	Impeller WST 2-4 assy	1
16	21260109	Flate head phillips 2.9x13 DIN 7982c-A2	4
17	20901229	Worm gear housing WSTsb 2-4 assy 2	1
18	20607709	O-ring ID-38 W-3 50shore	1
19	21081709	Hex cap screw M8X12 DIN 933-A2	4
20	23493309	Clamping plate f/spider WT 2-4	2
21	27042409	Spider front open WSTsb 2-4 mach.2	1
22	24900609	Transmission shaft bushing WST 4-2	1
23	26510409	Regulator WT 2 1/2-4 black	1
24	26730849	Upper transmission shaft WST assy 0020	1
25	26731939	Intermediate trans. shaft 0019 WST assy	1
26	23423609	Transmission plate WST 2-4	1
27	21260009	Pan phillips screw 6x1/2" DIN 7981	1
28	20602910	O-ring BUSAK 50 shore ID-95 W-4	1
29	25222459	Cover WSTsb 2"-4" blue	1
30	23026609	Washer M14 A2 DIN 125	4
31	21082119	Hex. cap screw M14x2x40 DIN 933	3
32	20602609	O-ring PARKER 2-112 ID-12.37 W-2.62	1
33	23126109	Sealing ring regulator device WT 2-4	1
34	20382709	Regulator lock nut WT	1

35	20602709	O-ring PARKER 2-116 ID-18.72 W-2.62	1
36	21082009	Regulator cap device WT	1
37	21082120	Hex. cap screw M14x2x40 DIN 933 drilled	1
38	20601709	O-ring PARKER 2-125	1
39	21430109	Upper bearing screw WST 2-4	1
40	23142609	Pressure ring	1
41	20613009	O-ring CPO No. NJ ID-64 W-1.5 70 SHORE	1
42	54011109	Register WSTsb 2 1/2" m3 3p EEC 0.873	1
43	23142709	Sliding ring	1
44	25824619	Plastic cover ARAD lid assy	1