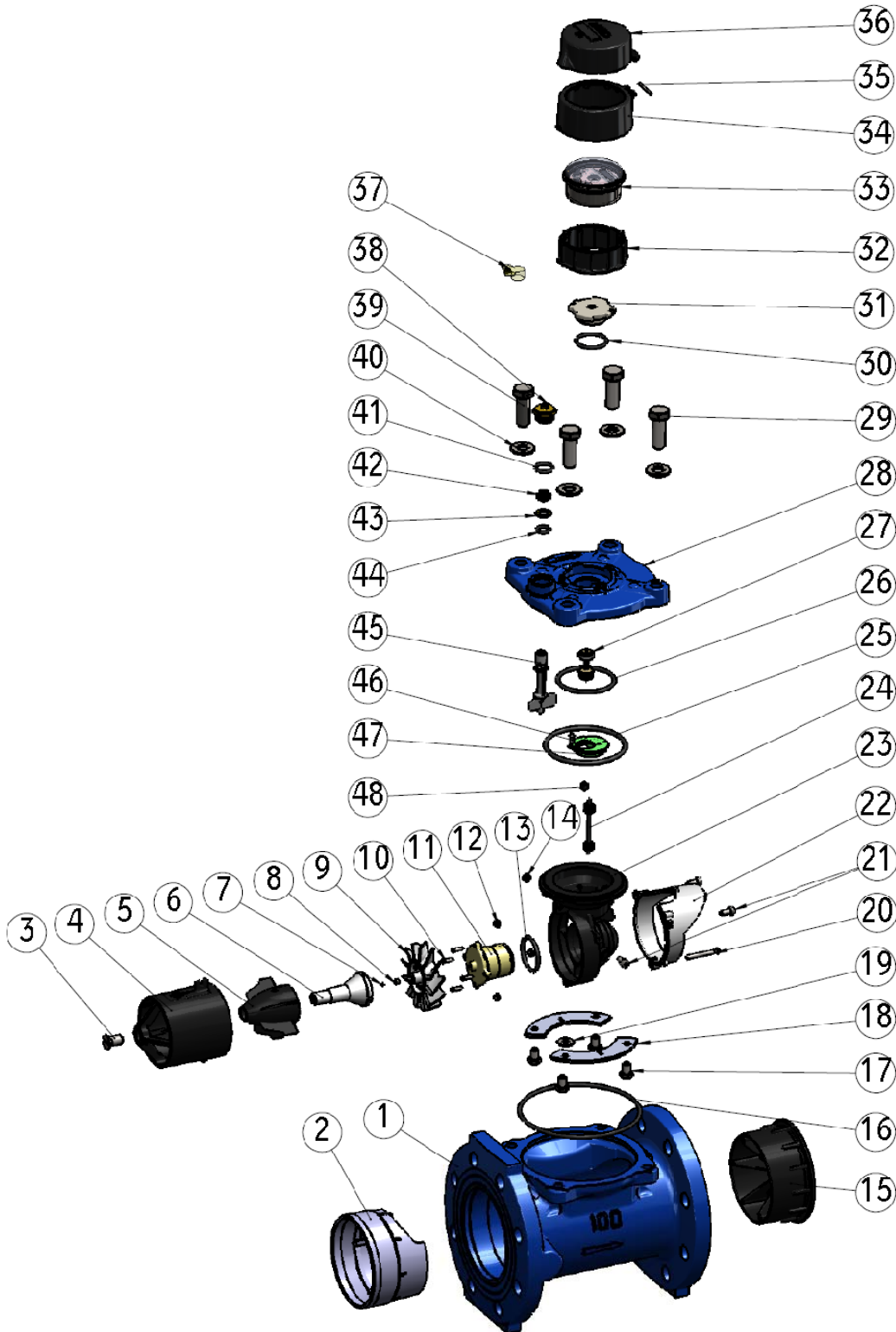


WSTsb 4" ISO Bayonet



WSTsb Bayonet 4"

No.	Cat. No.	Description	Quantity
1	3 22 409 09	BODY WST SB 4" ISO 16/10	1
2	2 63 302 09	INLET TUBE WST 4"	1
3	2 14 806 09	Screw M10 x 20 DIN 963 A2	1
4	2 63 542 09	FLOW TUBE WT 2 1/2-4	1
5	2 50 442 09	FLOW STRAIGHTENER BLADE L=38.5	1
6	2 09 401 09	BUSHING HOUSING WST 3,4	1
7	2 49 019 09	Thrust bearing 3.5x1.5 tung.car	1
8	2 49 021 09	Bearing 5x2.4x5 tung.car	1
9	2 37 436 19	IMPELLER WST 2"-4"	1
10	2 15 706 09	Pan head phillips screw 2.9X13 DIN 7981c-A4	4
11	2 09 012 29	Worm gear housing WSTsb 2-4 assy 2	1
12	2 03 821 09	HEX NUT M4 A2 DIN 985	1
13	2 06 077 09	O-ring ID-38 W-3 NBR 50	1
14	2 03 826 09	HEX NUT M5 A2 DIN 985	3
15	2 50 443 09	OUTLET STRAIGHTENER WST 4"	1
16	2 06 035 09	O-ring PARKER 2-254 ID-139.29 W-3.53 NBR 70	1
17	2 10 817 09	HEX CAP SCREW M8x12 DIN 933 A4	4
18	2 34 933 09	CLAMPING PLATE F/SPIDER WT 2"-4"	2
19	2 30 260 09	REAR SPIDER WASHER WT	1
20	2 12 802 09	SCREW M4-40 DIN 84 A2	1
21	2 11 817 09	SOCKET HEAD CAP SCREW M5x12 DIN912	3
22	2 46 226 09	REAR FLOW STRAIGHTENER WT 3"-4"	1
23	2 70 424 19	SPIDER WST 2-4" 0013 ASSY	1
24	2 67 319 19	Intermediate transmission shaft WST 0013 assy	1
25	2 06 029 10	O-RING BUSAK ID=95 W=4 SHORE 50° +5°	1
26	2 06 158 09	O ring PARKER 2-230 ID-63.09 W-3.53 NBR 70	1
27	2 66 713 19	Upper transmission shaft WST 0026 blue magnet 17.5 ass	1
28	2 52 247 59	Cover WSTsb 2-4 bayonet blue	1
29	2 10 821 19	Hex cap screw M14x40 DIN 933 A2	3
30	2 06 017 09	O-ring PARKER 2-125 ID-32.99 W-2.62 NBR 70	1
31	2 14 304 09	UPPER BEARING SCREW WST BAYONET BIG MAGNET	1
32	2 09 223 09	Register housing ARAD	1
33	5 40 540 10MID	Register WSTsb 4 x10 m3 MID 2.8	1
34	2 58 257 09	Bayonet shroud drilled	1
35	2 67 402 09	TRANSMISSION SHAFT K 3/4	1
36	2 76 322 09	PLASTIC LID SG-SS-HL LOGO ARAD	1
37	2 45 722 20	Plastic seal ARAD L=300mm	1
38	2 10 820 09	REGULATOR CAP SCREW WT	1
39	2 10 821 20	HEX SCREW M14x40 AISI304 DIN933 drilled	1
40	2 30 266 09	WASHER M14 A2 DIN 125	4
41	2 06 027 09	O-ring PARKER 2-116 ID-18.72 W-2.62 NBR 70	1
42	2 03 827 09	REGULATOR LOCK NUT WT 2-12	1

43	2 31 261 09	SEALING RING REGULATOR DEVICE WT 2"-4"	1
44	2 06 026 09	O-ring PARKER 2-112 ID-12.37 W-2.62 NBR 70	1
45	2 65 104 09	REGULATOR WT 2 1/2"-4" BLACK	1
46	2 12 600 09	PAN HEAD PHILLIPS SCREW 6x1/2" DIN 7981	1
47	2 34 236 09	Transmission plate WST 2-4	1
48	2 49 006 09	Transmission shaft bushing WST 2-4	1

