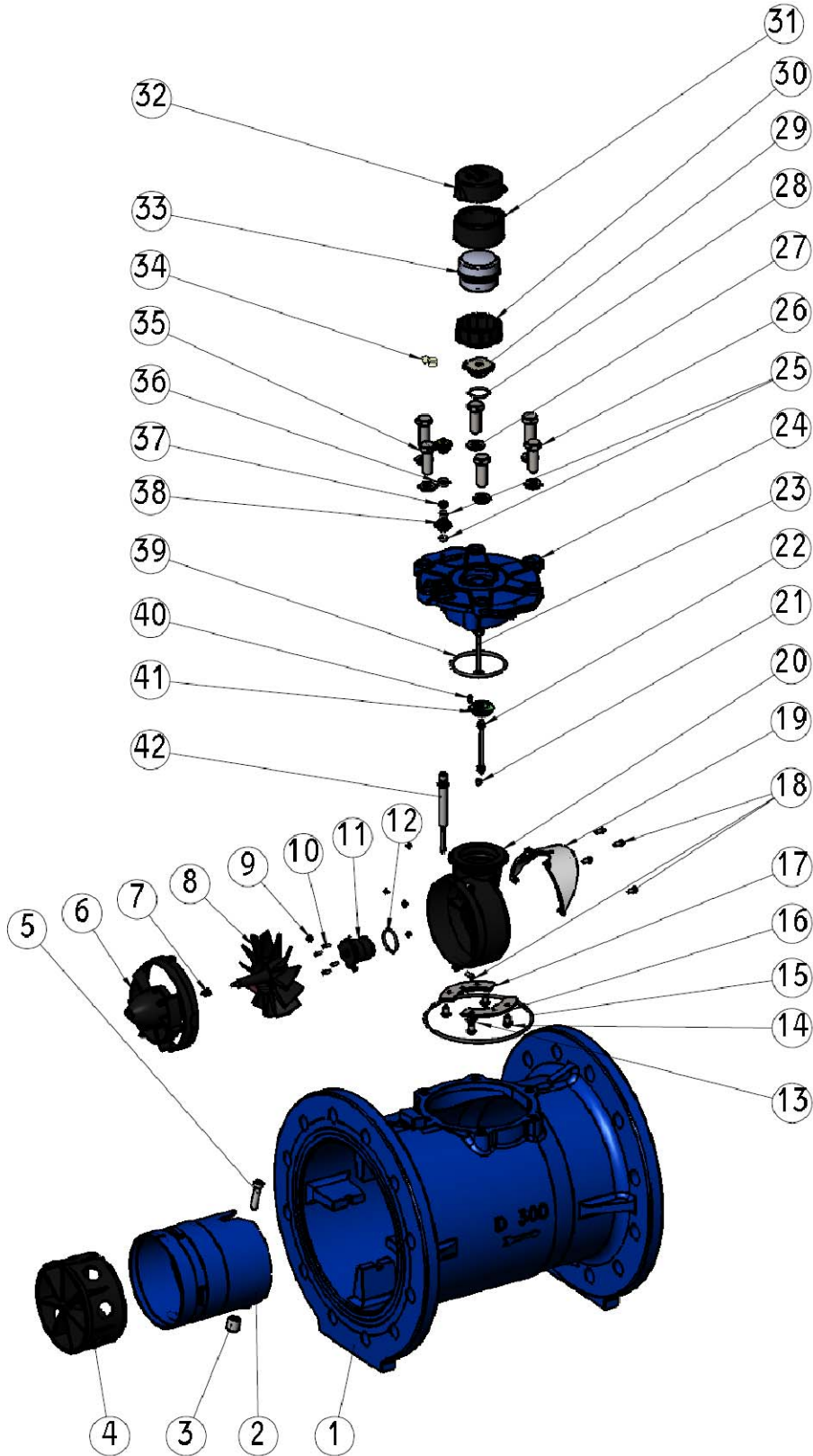


WSTsb 12" ISO Bayonet



WSTsb Bayonet 12"

No.	Cat. No.	Description	Quantity
1	3 22 801 59	Body WT 12 ISO blue	1
2	2 62 571 59	Flow tube WT 10-12 blue	1
3	2 84 003 09	Adapter pipe bushing WT 10-12	1
4	2 50 480 09	Flow straightener WT 6-12	1
5	2 14 804 09	Socket head cap screw M10x40 DIN 912 A2	1
6	2 50 482 09	Front spider WT 6-12	1
7	2 09 407 19	Housing bearing WT-II 6-8 assy	1
8	2 37 425 69	Impeller WSTsb 6-12 assy	1
9	2 03 826 09	Hex nut M5 A2 DIN 985	6
10	2 15 706 09	Pan head phillips screw 2.9X13 DIN 7981c-A4	4
11	2 09 014 19	Worm gear housing WSTsb 6-12 assy.2	1
12	2 06 077 09	O-ring ID-38 W-3 NBR 50	1
13	2 30 260 09	Rear spider washer WT	1
14	2 10 817 09	Hex cap screw M8X12 A2 DIN 933	4
15	2 06 030 09	O-ring PARKER 2-263 ID-183.74 W-3.53 NBR 70	1
16	2 34 933 09	Clamping plate f/spider WT 2-4	1
17	2 34 933 09	Clamping plate f/spider WT 2-4	1
18	2 11 817 09	Socket head cap screw M5x12 AISI304	6
19	2 46 266 09	Rear flow straightener WT 8-12	1
20	2 70 466 09	Spider WSTsb 6-12	1
21	2 49 018 09	Upper transmission shaft bushing WT-II 6-8	1
22	2 67 320 19	Intermediate shaft WSTsb 6-12 0013 assy	1
23	2 66 702 19	Upper transmission shaft WT-II 10-12 magnet 17.5 assy	1
24	2 52 240 59	Cover WT 10-12 bayonet blue	1
25	2 06 026 09	O-ring PARKER 2-112 ID-12.37 W-2.62 NBR 70	2
26	2 10 819 09	Hex cap screw M16x2x45 AISI304 DIN 933	5
27	2 30 213 09	Washer M16 A2 DIN125	6
28	2 06 017 09	O-ring PARKER 2-125 ID-32.99 W-2.62 NBR 70	1
29	2 14 304 09	Upper bearing screw WST bayonet big magnet	1
30	2 09 223 09	Register housing ARAD	1
31	2 58 257 19	Bayonet shroud drilled logo ARAD	1
32	2 76 322 09	Plastic lid HL logo ARAD	1
33	5 40 091 80MID	Register WSTsb 12 m3 3p MID 1.452	1
34	2 45 722 20	Plastic seal ARAD L=300mm	1
35	2 10 819 10	Hex cap screw M16x2x45 DIN 933 drilled	1
36	2 06 027 09	O-ring PARKER 2-116 ID-18.72 W-2.62 NBR 70	1
37	2 03 827 09	Regulation lock nut WT	1
38	2 85 306 09	Regulator bushing WT 6-12	1
39	2 06 029 10	O-ring BUSAK ID-95 W-4 NBR 50 NSF61	1
40	2 12 600 09	Pan phillips screw 6x1/2 DIN 7981	1
41	2 34 236 09	Transmission plate WST 2-4	1
42	2 65 722 09	Integral regulator shaft WT 10-12 S.ST	1